

**SALE PRICE: \$595,000**



## 3115 BEAR CREEK BLVD., BEAR CREEK TWP, PA 18702

6,807 SF+/- mixed use building situated on 1.64+/- acres. First level features 3,680 SF+/- of office space with 2,468 SF+/- apartment space on the second floor. There is also a 659 SF attached two-car garage. Property is situated along Rt. 115 across from the PA Turnpike Exit 105 / Wilkes-Barre Interchange.

### PROPERTY DETAILS:

- 6,807 SF+/-
- PIN: J11S4001002-04
- 1.64+/- Acres
- 162.83 ft. Frontage
- Private Well
- Septic System
- Shingle and Flat Rubber Roof
- 8 ft. Ceiling Heights
- State of the Art HVAC System as of 2012
- Central A/C
- Zoned B-2 (General Commercial)
- 2024 Taxes - \$4,950

### For Information Contact:

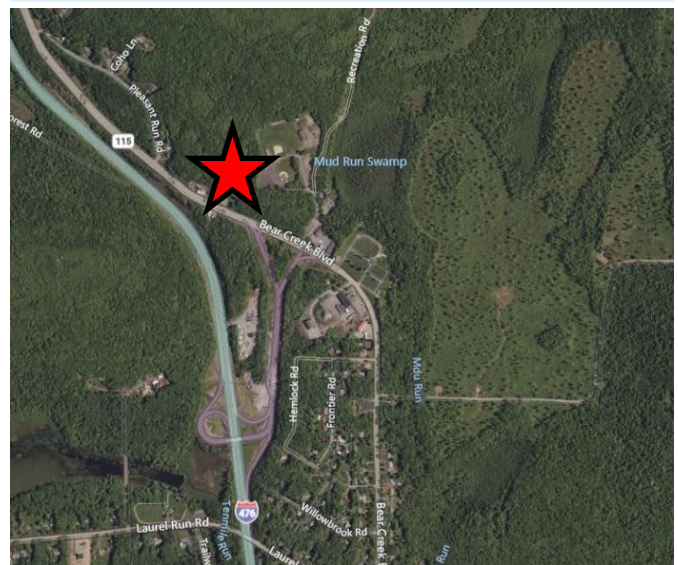
**Al Guari, Vice President-Brokerage**

aguari@mericle.com

Office: 570.823.1100 \* Cell: 570.499.2889

LATITUDE: 41.206194

LONGITUDE: -75.794113



Information shown is purported to be from reliable sources. No representation is made to the accuracy thereof, and is submitted subject to errors, omissions, prior sale/lease, withdrawal notice, or other conditions.

**570.823.1100**  
mericle.com



East Mountain Corporate Center  
100 Baltimore Drive  
Wilkes-Barre, PA 18702

*Developing Northeastern Pennsylvania's I-81 Corridor Since 1985*

**TCN**  
WORLDWIDE  
REAL ESTATE SERVICES