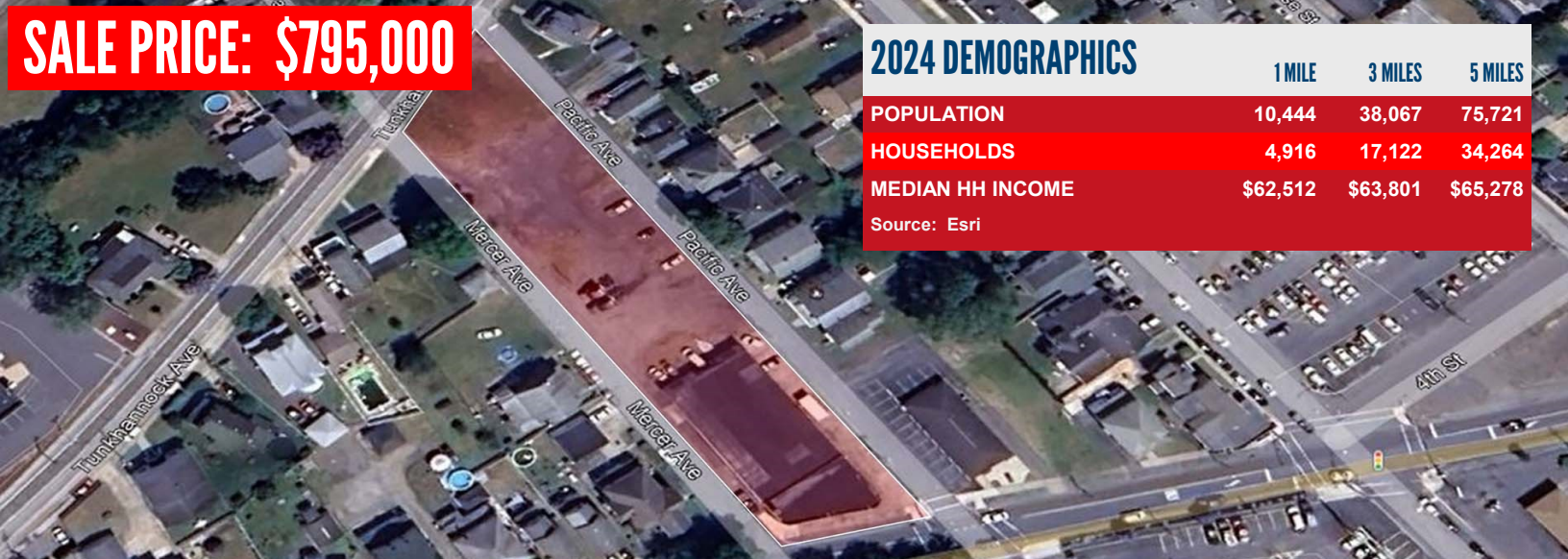


SALE PRICE: \$795,000



2024 DEMOGRAPHICS	1 MILE	3 MILES	5 MILES
POPULATION	10,444	38,067	75,721
HOUSEHOLDS	4,916	17,122	34,264
MEDIAN HH INCOME	\$62,512	\$63,801	\$65,278

Source: Esri

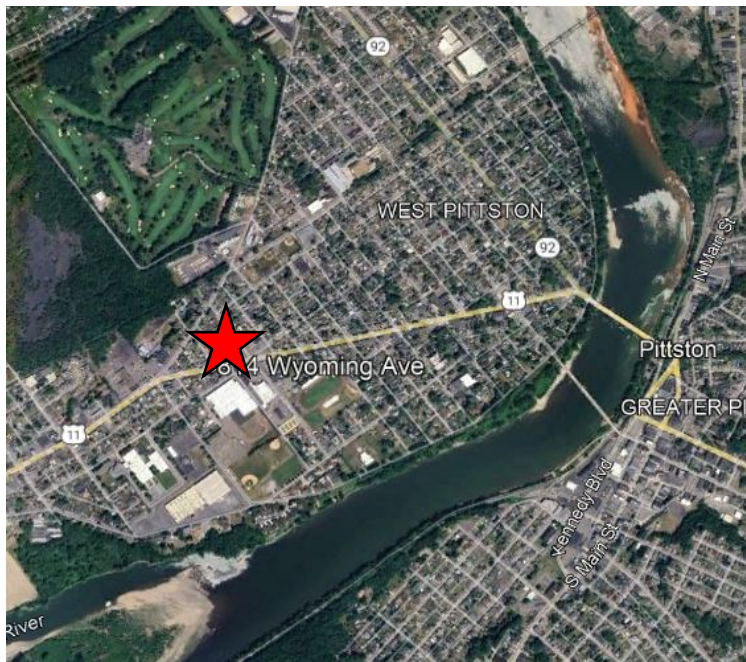
814-820 WYOMING AVENUE, W. PITTSTON, PA 18643

Prime location with a free standing 9,440 SF+/- building on 1.05 acre corner block lot in West Pittston Borough. This well constructed building was originally a former auto dealership and features concrete floors, block walls, massive steel beams, open warehouse floor space no columns, openings for several overhead doors and windows, front showroom/office area of 2,400 SF. Building is a shell with no utilities but great bones offering many opportunities & possibilities with a level large lot for parking or additional buildings. Public utilities are available to the property. A rare find on the west side main thoroughfare to own an entire block among the retail and residential corridor.

PROPERTY DETAILS:

- 9,440 SF+/- Building
- 1.049+/- Acres
- PINs: E11NW3002001-65; E11NW3002015-65
- Block/Masonry Exterior
- Rubber Roof
- Public Utilities Available
- 12' Front and 15' Ceilings in Rear
- 100 ft. Frontage
- Large Parking Field
- Zoned B-2 (General Business)
- 2024 Taxes - \$11,665.65
- AADT - 8,661 on Wyoming Ave (PennDOT TIRe 2021)
- AADT: 3,571 on Tunkhannock Ave (PennDOT TIRe 2021)

LATITUDE: 41.325670 LONGITUDE: -75.807790



For Information Contact:

Julia D. Namutka, Sales Associate
 jnamutka@mericle.com
 Office: 570.823.1100 * Cell: 570.881.9512

Information shown is purported to be from reliable sources. No representation is made to the accuracy thereof, and is submitted subject to errors, omissions, prior sale/lease, withdrawal notice, or other conditions.