

LEASE PRICE: \$14.00/SF NNN



715 WASHINGTON BLVD, WILLIAMSPORT, PA 17701

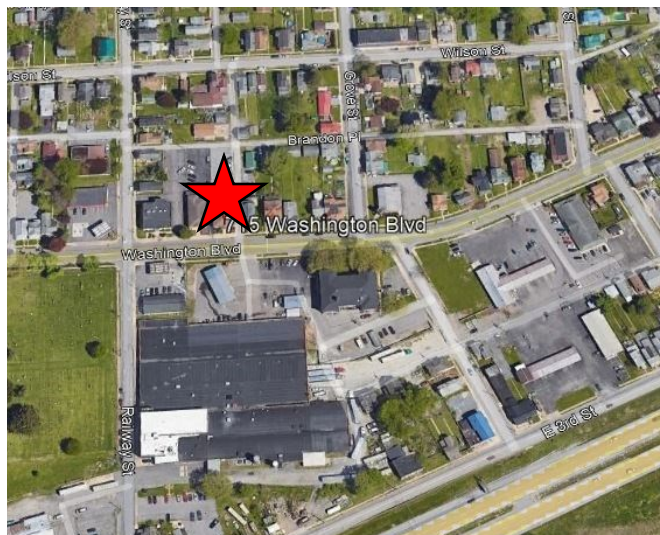
LATITUDE: 41.247910

LONGITUDE: -76.989967

This modern professional office building is a terrific opportunity. 4,500 SF+/- with 20 parking spaces in the rear and located along a public bus route. 2,250 SF floor could also be for retail use. Building is in excellent condition! Washington Blvd. is a high traffic location with many commercial properties along its corridor.

PROPERTY DETAILS:

- 4,500 SF+/- Building
- .23+/- Acres
- PIN: 61-003-616
- 50 ft Frontage
- Public Utilities
- Gas Forced Hot Air Heat
- Central A/C
- Brick Exterior
- Gas Hot Water Heater
- Shingle Roof
- 9 ft Ceiling Heights
- Partial Basement
- 5 Restrooms
- Elevator
- Carpet, Tile Floor Covering
- 20 Parking Spaces
- Zoned CC (Commercial District)
- AADT: 10,325 (PennDOT TIRe 2021)



For Information Contact:

Donald Cortese, CCIM, Sales Associate
dcortese@mericle.com

Office: 570.323.1100 * Cell: 570.772.1817

Information shown is purported to be from reliable sources. No representation is made to the accuracy thereof, and is submitted subject to errors, omissions, prior sale/lease, withdrawal notice, or other conditions.

570.823.1100
mericle.com



East Mountain Corporate Center
100 Baltimore Drive
Wilkes-Barre, PA 18702

Developing Northeastern Pennsylvania's I-81 Corridor Since 1985

TCN
WORLDWIDE
REAL ESTATE SERVICES