

SALE PRICE: \$585,000



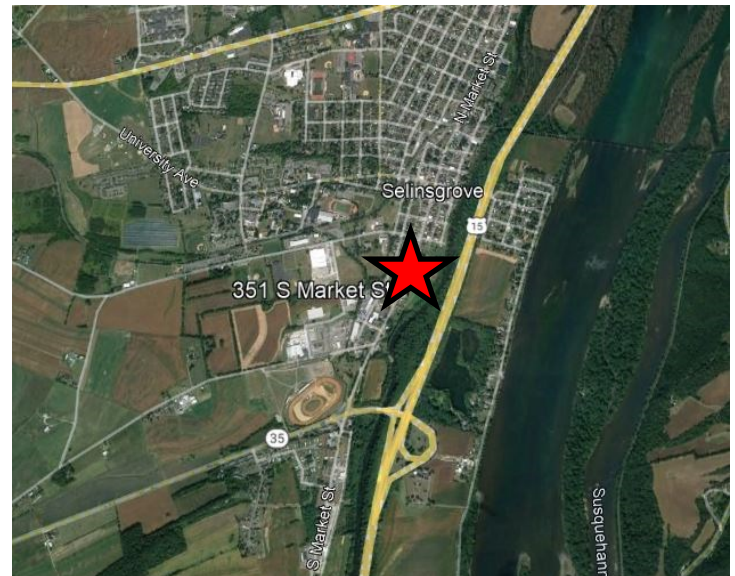
LATITUDE: 40.793730 LONGITUDE: -76.863770

351, 353 S. MARKET STREET, SELINGROVE, PA 17870

Two 3,564 SF+/- very well maintained 4-unit apartment buildings, fully occupied. Each building features new windows in each unit, a coin operated laundry facility in the basement, total electric. Property is located on the quiet south end of Selingsrove with easy access from S. Market Street and only a short distance to downtown.

PROPERTY DETAILS:

- 7,128 SF+/- (Two 3,564 SF Buildings)
- PIN: 15.10.075
- 0.7+/- Acres
- 200 ft. Frontage
- 160 ft. Depth
- Brick Exterior
- Shingle Roof
- Public Utilities
- 8 ft. Ceiling Heights
- HVAC
- Electric Heat
- Electric Hot Water
- 8 Bathrooms (2 Buildings)
- Carpet Floor Covering
- Parking for 8 Vehicles
- Zoned R-C (Residential Commercial)
- 2023/2024 Taxes - \$8,088.10



For Information Contact:

Donald Cortese, CCIM, Sales Associate

dcortese@mericle.com

Office: 570.323.1100 * Cell: 570.772.1817

Information shown is purported to be from reliable sources. No representation is made to the accuracy thereof, and is submitted subject to errors, omissions, prior sale/lease, withdrawal notice, or other conditions.

570.823.1100
mericle.com



East Mountain Corporate Center
100 Baltimore Drive
Wilkes-Barre, PA 18702

Developing Northeastern Pennsylvania's I-81 Corridor Since 1985

TCN
WORLDWIDE
REAL ESTATE SERVICES